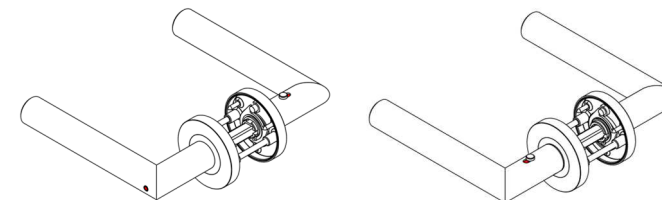


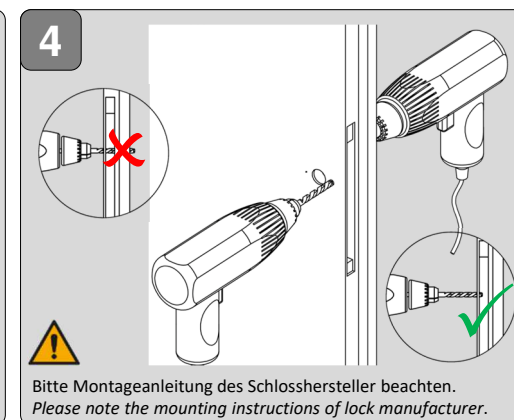
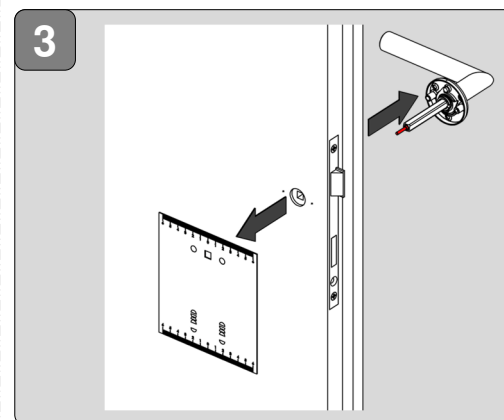
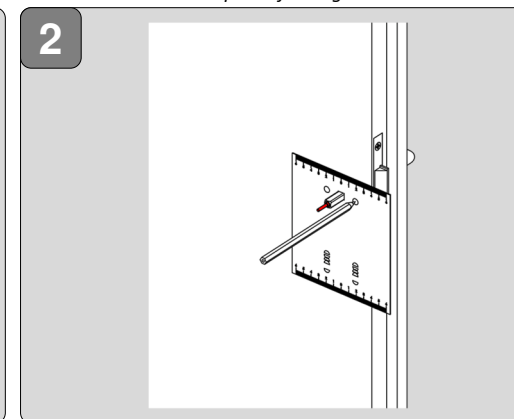
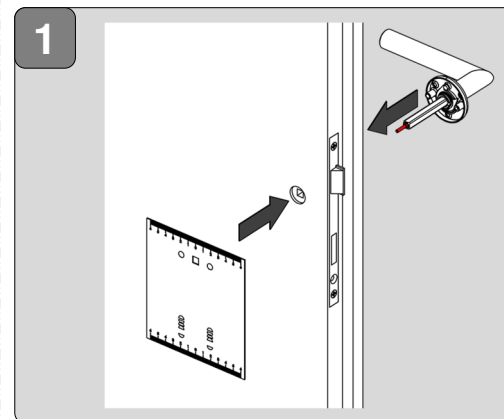
MONTAGEANLEITUNG DRÜCKERGARNITUR SCHRAUBTECHNIK SMART2LOCK 2.0  
MOUNTING INSTRUCTIONS HANDLE SET SCREW-ON TECHNIQUE SMART2LOCK 2.0




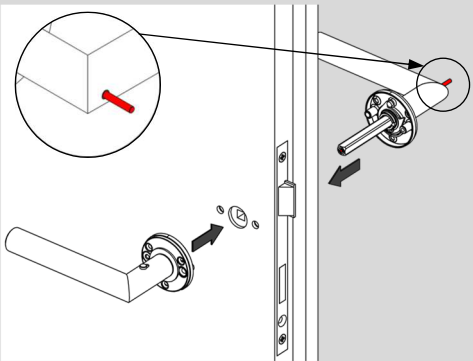
Ausgelegt für Türstärkenbereich /  
designed for door thickness range

**38-45mm**

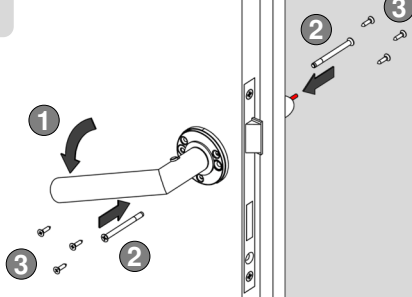
für größere Türstärken werden  
Erweiterungssets benötigt / extension sets  
are required for larger door thicknesses



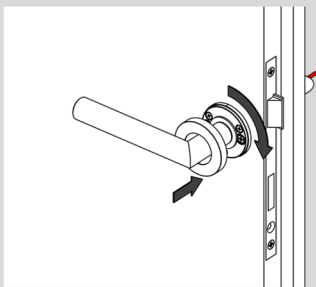
**5**  Stift muss über den Griff herausstehen /  
Pin must protrude over the handle



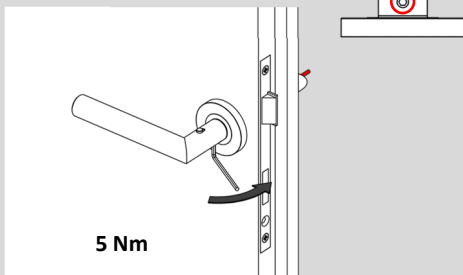
**6**




**7**

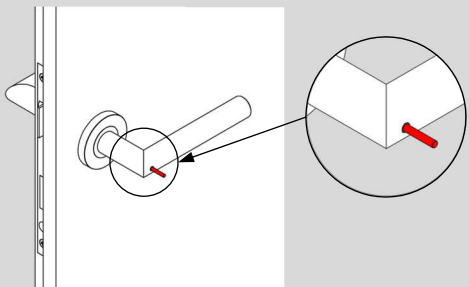
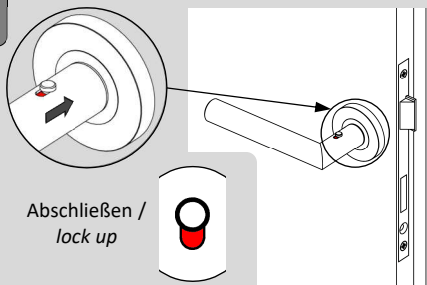


**8** Griffunterseite / handle bottom

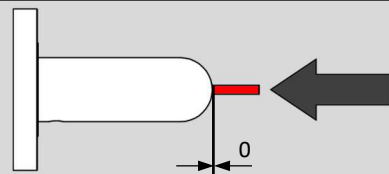


 Bei erneuter Montage neue Madenschraube  
oder Schraubensicherung verwenden /  
Use a new grub screw or screw lock when  
reinstalling

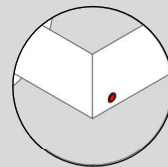
**9**



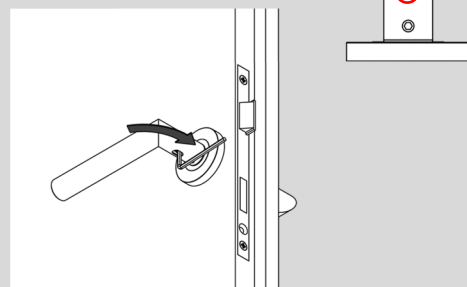
**10**




Pin zurückschieben, bis er mit dem  
Griff bündig ist/  
Push the pin back until it is flush  
with the handle




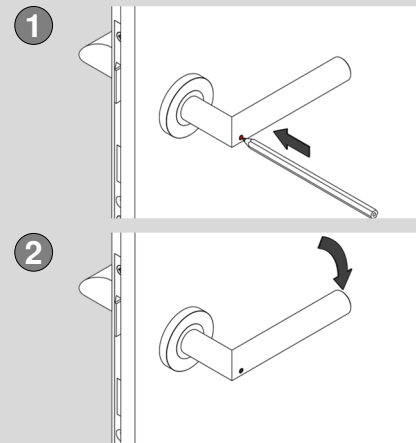
Griffunterseite / handle bottom



 Madenschraube nur Handfest anziehen /  
Tighten grub screw only hand tight

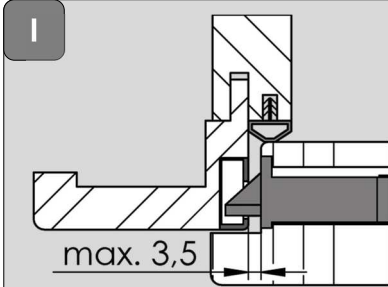
**Notentriegelung / emergency release**

 **Notentriegelung nach erfolgter Montage  
prüfen / check emergency release after  
installation**



Geeignet sind Gegenstände mit einem Durchmesser von  
 $\leq 3\text{mm}$  und einer Länge von mind. 4mm / Objects with  
a diameter of  $\leq 3\text{mm}$  and a length of at least 5mm are  
suitable

- z.B / e.g.
- Bleistift / pencil
  - Kugelschreiber / ballpoint pen
  - Zahnstocher / toothpick
  - Büroklammer / paperclip



Um eine einwandfreie Funktion der SMART2LOCK Garnituren zu  
gewähren, darf der Abstand zwischen Schließblech und  
Schlossstulp max. 3,5mm betragen. Ggf. muss das Türblatt über  
ein Einstellen der Bänder angepasst werden.

In order to ensure proper functioning of the SMART2LOCK fittings,  
the distance between the strike plate and the lock faceplate must  
not exceed 3.5 mm. If necessary, the door leaf must be adjusted by  
adjusting the hinges.